

## Overview

### Applications

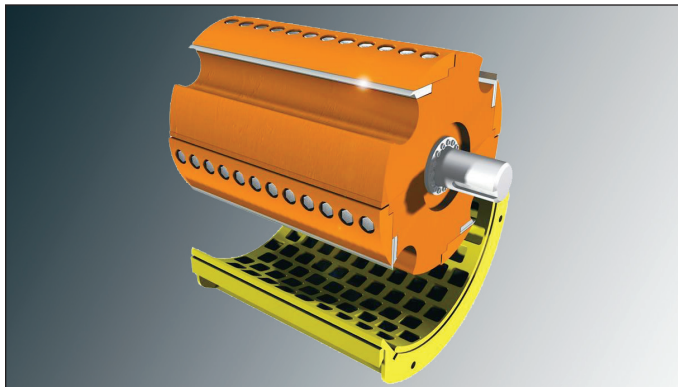
The SKD chipper produces pulp quality chips from a wide variety of material such as lumber trim ends, slabs, veneer trims, edgings, blocks, log ends, oversized chips and solid wood waste.

### Features

- ▶ Hinged casing provides access to the drum
- ▶ Swing away anvil
- ▶ Large side covers for inspection
- ▶ Heavy-duty, solid steel rotor
- ▶ Screen grate mounted under rotor

### Benefits

- ▶ Minimize maintenance requirements during knife changes
- ▶ Built in protection from metal and/or rocks
- ▶ Easily replace wear parts
- ▶ High inertia, rugged rotor
- ▶ Prevents the production of oversized chips



The SKD (Straight Knife Drum) Chipper is one of the most Rugged and versatile chippers in the industry. It has proven itself on a wide range of materials, including typical sawmill and planer mill waste.

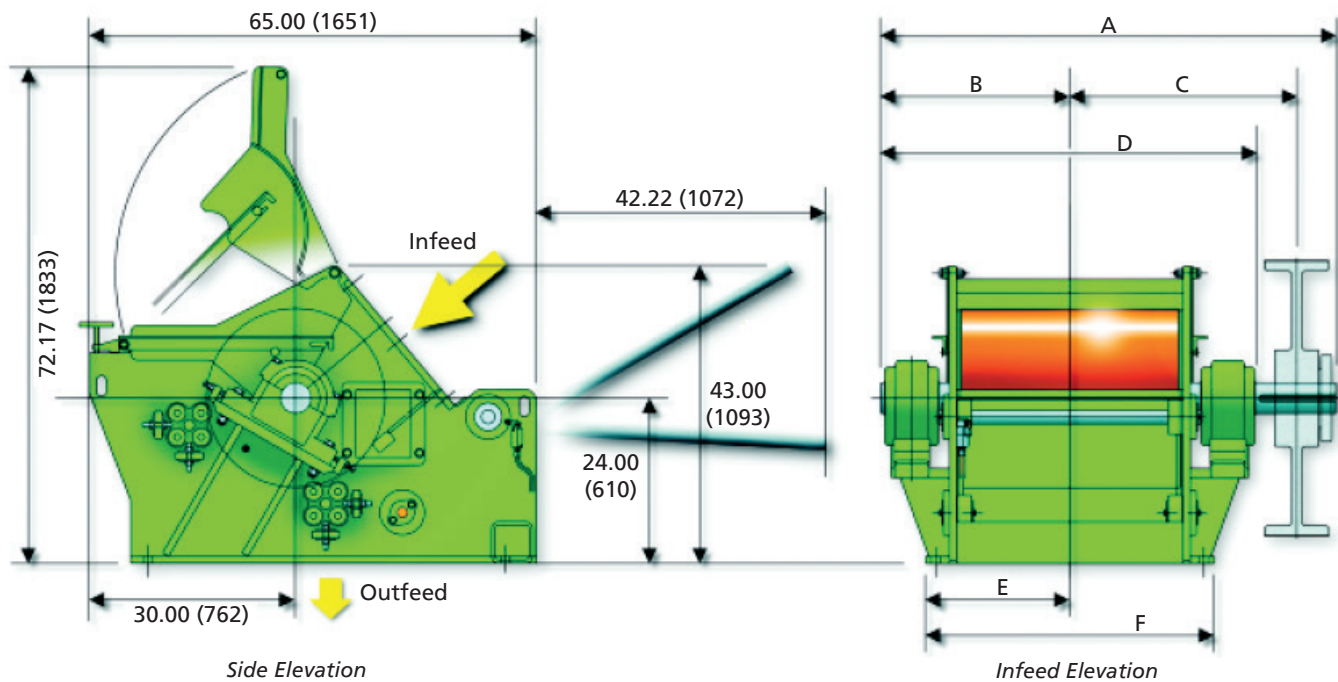
The heavy rotating drum is available with 2, 4 or 6 knife pockets to suit a range of production volumes. The unique and highly developed profile of the knife pockets significantly reduces chip breakage from impact.

Large access doors have been provided on each side of the chipper to make anvil replacement and knife-to-anvil adjustment quick and easy.

The anvil has two hardened edges to extend its service life and reduce maintenance costs.

The SKD Chipper features a heavy screen that re-chips overs and long slivers. The screen is adjustable from the outside of the chipper to fine-tune chip output.

# SKD CHIPPER



## SKD Chipper Specifications

SKD Size (Dia x Length) - In. (mm)	26 x 16 (660 x 406)	26 x 32 (660 x 813)
Spout Width - in. (mm)	15.50 (394)	31.50 (800)
Spout Height - in. (mm)	18.00 (457)	18.00 (457)
Log Dia. Max - in. (mm)	9.75 (250)	9.75 (250)
Knife Pockets on Drum	2, 4 or 6	2, 4 or 6
Knife Sections per Pocket	1	2
Drum RPM, Nominal	600	600
Belt Drive, Max. Hp. (kW)	75-250 (55-185)	75-250 (55-185)
Dimension A - in. (mm)	50.25 (1276)	66.25 (1687)
Dimension B - in. (mm)	19.50 (495)	27.50 (698)
Dimension C - in. (mm)	25.00 (635)	33.00 (838)
Dimension D - in. (mm)	39.00 (991)	55.00 (1397)
Dimension E - in. (mm)	13.00 (330)	21.00 (533)
Dimension F - in. (mm)	26.00 (660)	42.00 (1067)
Weight - Lbs. (kg)	4,500 (2,045)	8,000 (3,640)

The SKD Chipper is available in larger sizes with rotor diameters up to 60 inches (1524mm). Please contact Kadant Carmanah for more information on large SKD chippers.

**KADANT**  
AN ACCENT ON INNOVATION

Kadant is a leading global supplier of products and services that improve productivity and quality in paper production and other process industries. For the nearest location and contact, visit our Website.

[www.kadantcarmanah.com](http://www.kadantcarmanah.com)

Contact us:

KADANT CARMANAH  
Unit #8 - 15050 - 54A Avenue  
Surrey, BC Canada V3S 5X7

Tel: +1-604-299-3431

Fax: +1-604-299-1310

Email: [info.carmanah@kadant.com](mailto:info.carmanah@kadant.com)